



PSD 48x/49x	Nominal torque / Nominal rated speed ¹⁾	Self-holding torque (energized)	Max. speed	Positioning range ²⁾
0-5V	0.25 Nm/200 min ⁻¹	0.125 Nm	800 min ⁻¹	4026 rot.
0-8H	0.25 Nm/200 min ⁻¹	0.125 Nm	500 min ⁻¹	4026 rot.
0-14H	0.25 Nm/200 min ⁻¹	0.125 Nm	500 min ⁻¹	4026 rot.
1-8H	1 Nm/50 min ⁻¹	0.5 Nm	250 min ⁻¹	986 rot.
1-14H	1 Nm/50 min ⁻¹	0.5 Nm	250 min ⁻¹	986 rot.

¹⁾ at nominal supply voltage

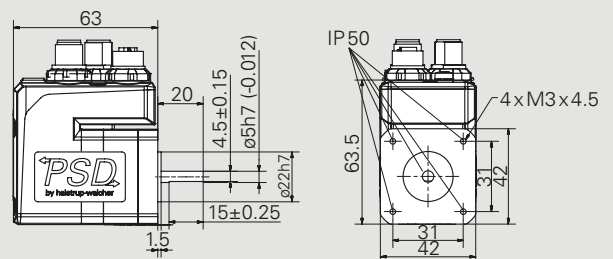
²⁾ not subject to mechanical limits

Supply voltage	24 VDC ± 10 % galvanically separated between motor and control
Nominal current	2.0 A
Power consumption (control unit)	0.1 A
Positioning accuracy	± 0.7° for 1 Nm ± 1.8° for 0.25 Nm
Absolute measurement system	magnetic, without reference run, without buffer battery
Shock resistance in accordance with IEC/DIN EN 60068-2-27	50 g 11 ms ± 3 shocks pos./neg. per axis
Vibration resistance in accordance with IEC/DIN EN 60068-2-6	10..2000 Hz 50 m/s ² (approx. 5 g) 10 frequency cycles
Output shaft	5 mm solid shaft with flattening or 8/14 mm hollow shaft ³⁾ with torque support
Max. axial force	15 N, 20 N with attached housing
Max. radial force	40 N
Ambient temperature	0..40 °C
Storage temperature	-10..70 °C
Protection class	IP50 or IP65 ⁴⁾
Weight	max. 0.85 kg (0.55 kg without gearbox)
Certificates	CE/UKCA, optional: NRTL

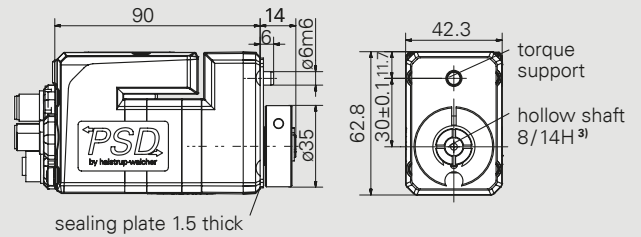
³⁾ see table next to the characteristic curve

⁴⁾ IP65 installed (motor shaft IP50)

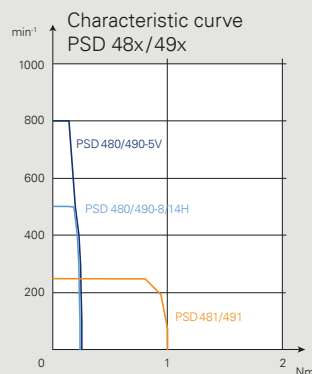
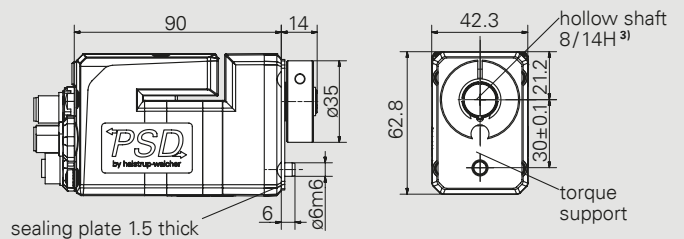
PSD 480-5V (solid shaft)



PSD 490-8H / -14H (hollow shaft, 0.25 Nm)




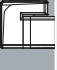
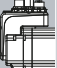
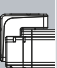


PSD 491-8H / -14H (hollow shaft, 1 Nm)



	Hollow shaft	
	ø8	ø14
Tolerance	H7	
Plug depth	20	
Cylinder screw	DIN912 M4x16	

Dimensions in mm

Order code PSD 4 series

Order code	A	B	C	D	E	F	G	H
PSD								
A	B	C	D	E	F	G	H	
Type	Torque/ Output shaft	Rotation shaft/ Housing	Bus communication ¹⁾	Electical connections	Protection class	Software modules	Certificates	
 40: horizontal	1-5V 1-8H 1-14H with gearbox:	S: direct or 0° 1: 90° 2: 180° 3: 270°	CA: CANopen IO: IO-Link PN: PROFINET EC: EtherCAT EI: EtherNet/ IP	0: standard ²⁾	50: IP50 65: IP65 ³⁾	1: standard M: with modulo function ⁴⁾ S: with changeover of parameter set ⁴⁾ P: with target speed in process data ⁴⁾ Z: with modulo function and changeover of parameter set and target speed in process data ⁴⁾	0: CE / UKCA N: NRTL + CE / UKCA	
 41: vertical	3-8H 3-14H							
 42: horizontal	2-8V 2-8H 2-14H with gearbox:							
 43: vertical	4-14H 6-14H 8-14H							
 48: horizontal	0-5V 0-8H 0-14H with gearbox:							
 49: vertical	1-8H 1-14H							

	B		C					
	Key	Torque	Output shaft	Rotation shaft/Housing				
	B1-B2	B1	B2	S	1	2	3	
direct	1-5V	1: 0.8 Nm	5V: 5 mm solid shaft		-	-	-	
	1-8H 1-14H	1: 0.8 Nm	8H: 8 mm hollow shaft 14H: 14 mm hollow shaft					
with gearbox	3-8H 3-14H	3: 3 Nm	8H: 8 mm hollow shaft 14H: 14 mm hollow shaft					
	direct	2-8V	2: 2 Nm	8V: 8 mm solid shaft		-	-	-
2-8H 2-14H		2: 2 Nm	8H: 8 mm hollow shaft 14H: 14 mm hollow shaft					
with gearbox	4-14H 6-14H 8-14H	4: 4 Nm 6: 6 Nm 8: 8 Nm	14H: 14 mm hollow shaft					
	direct	0-5V	0: 0.25 Nm	5V: 5 mm solid shaft		-	-	-
		0-8H 0-14H	0: 0.25 Nm	8H: 8 mm hollow shaft 14H: 14 mm hollow shaft				
with gearbox	1-8H 1-14H	1: 1 Nm	8H: 8 mm hollow shaft 14H: 14 mm hollow shaft					

¹⁾ others on request

²⁾ standard equipment: 3 plugs / sockets
with IO-Link: 1 plug

³⁾ IP 65 installed (motor shaft IP 50)

⁴⁾ only for IO-Link devices



To place your order, please call us at
+49 7661 3963-0 or email us at
info@halstrup-walcher.com.
For additional contacts, please visit
www.halstrup-walcher.de/en/contact

Accessories for our direct drives

The connectors shown here can be used for all direct drives of the PSD 4 series. We are happy to help you find the right accessories, please contact us directly.

Buscommunication	Power supply (+ databus connector) ¹⁾ (for option 0)	Cable
CANopen	 Connector set: Order no. 9601.0060	on request
EtherCAT	 Connector set: Order no. 9601.0112	
PROFINET		
EtherNet/IP		
IO-Link	 Connector: Order no. 9601.0107	

¹⁾ see in order code under E

Software

Use our function blocks, description files or commissioning tools for the various industrial protocols. You can download the files under www.halstrup-walcher.de/en/software. To do this, enter your specific product in the drop-down menu that appears and select the Software tab in the tab view. After that, the software components are available to you.

