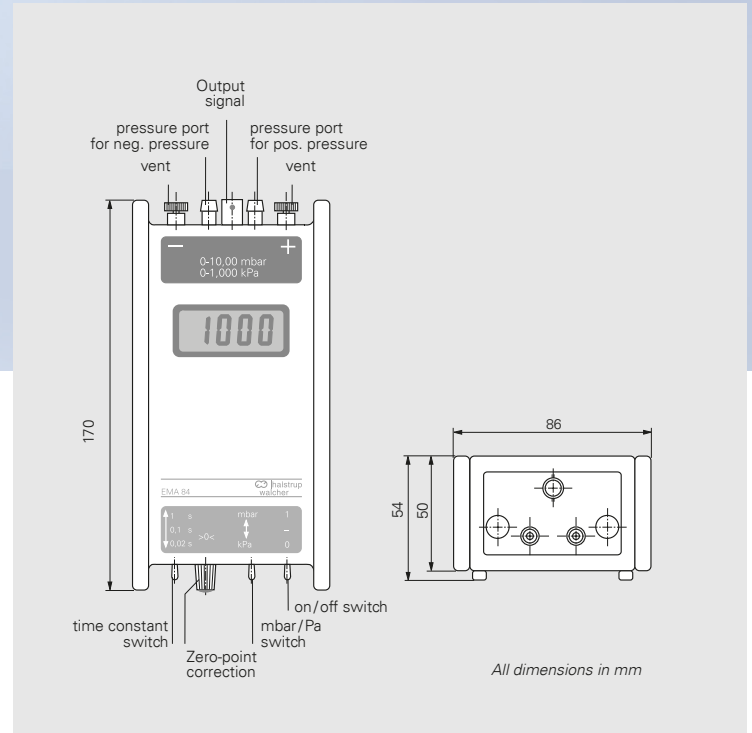




Features

- Very robust digital pressure gauge
- Ideal for service technicians, easy-to-read display
- High level of accuracy
- Manual zero-point correction
- With optional output signal for writer or power/voltage logger



Measurement accuracy ¹⁾	± 0.2 % FS measurement range 1 .. 10 kPa or ± 0.5 % FS measurement range 1 .. 100 kPa or ± 1 % FS
Overload capacity	10 x for measurement range ≤ 10 kPa 2 x for measurement range > 10 kPa
Zero-point correction	via potentiometer on front face
Medium	air, all non-aggressive and non-flammable gases
Output signal	0..1 V ($R_L \geq 2 \text{ k}\Omega$) BNC connector
Display	3 ½ digit LCD, character height = 13 mm
Time constants	toggles between 0.02 s; 0.2 s; 1 s
Operating temperature	10..60 °C
Storage temperature	-10..70 °C
Operating position	preferably horizontal
Power supply	9 V battery
Weight	approx. 800 g
Pressure ports	for tubing NW 6 mm
Certificates	CE/UKCA

¹⁾ Measurement accuracy for the reference 0.3 Pa, for measuring ranges ≤ ±1.5 kPa

Order Code	A	B	C	D
EMA 84	-	-	-	-

Measurement range	A
0.. 100 Pa	(0.. 1 mbar) 0
0.. 1 kPa	(0.. 10 mbar) 1
0.. 10 kPa	(0.. 100 mbar) 10
0.. 100 kPa	(0.. 1000 mbar) 100

Measurement accuracy	B
± 0.2 % FS measurement range 1 .. 10 kPa	2
± 0.5 % FS measurement range 1 .. 100 kPa	5
± 1 % FS	1

Output signal	C
none	0
0..1 V (optional)	1

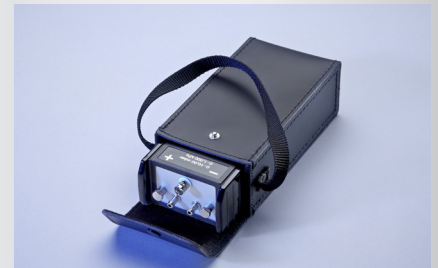
Calibration certificate	D
none	0
Factory calibration	W
Calibration according to DKD-R 6-1	D

Accessories



Shoulder bag EMA 200
Order no. 9074.0001

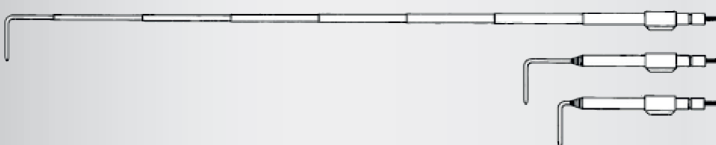
Carrying bag EMA 84
Order no. 9063.0001
(without LCD viewing window)
Order no. 9064.0001
(with LCD viewing window)



- Silicone tubing ID 5 mm, AD 9 mm, red
(please state length required)
- Silicone tubing ID 5 mm, AD 9 mm, blue
(please state length required)
- Norprene tubing ID 4,8 mm, AD 8 mm, black
(please state length required)
- Y-piece for tubing, NW 5mm
- Telescoping pitot tube for flow measurements (EMA 200)

- Order no.**
- 9601.0160
 - 9601.0161
 - 9061.0132
 - 9601.0171
 - 9061.0193

Telescoping pitot tube for flow measurements



- Max. working length: 980 mm
- Min. working length: 250 mm
- Transport length: approx. 200 mm